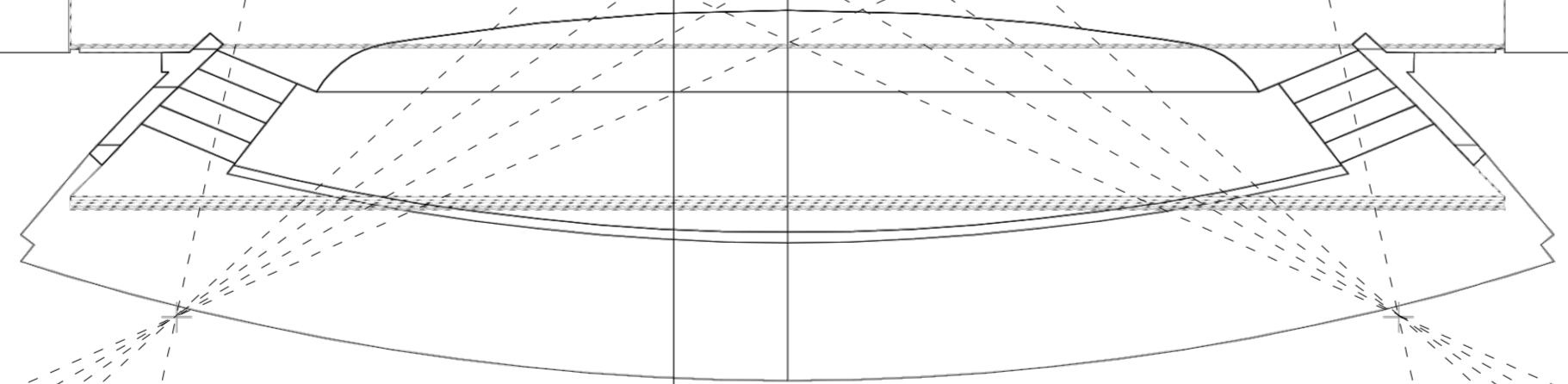
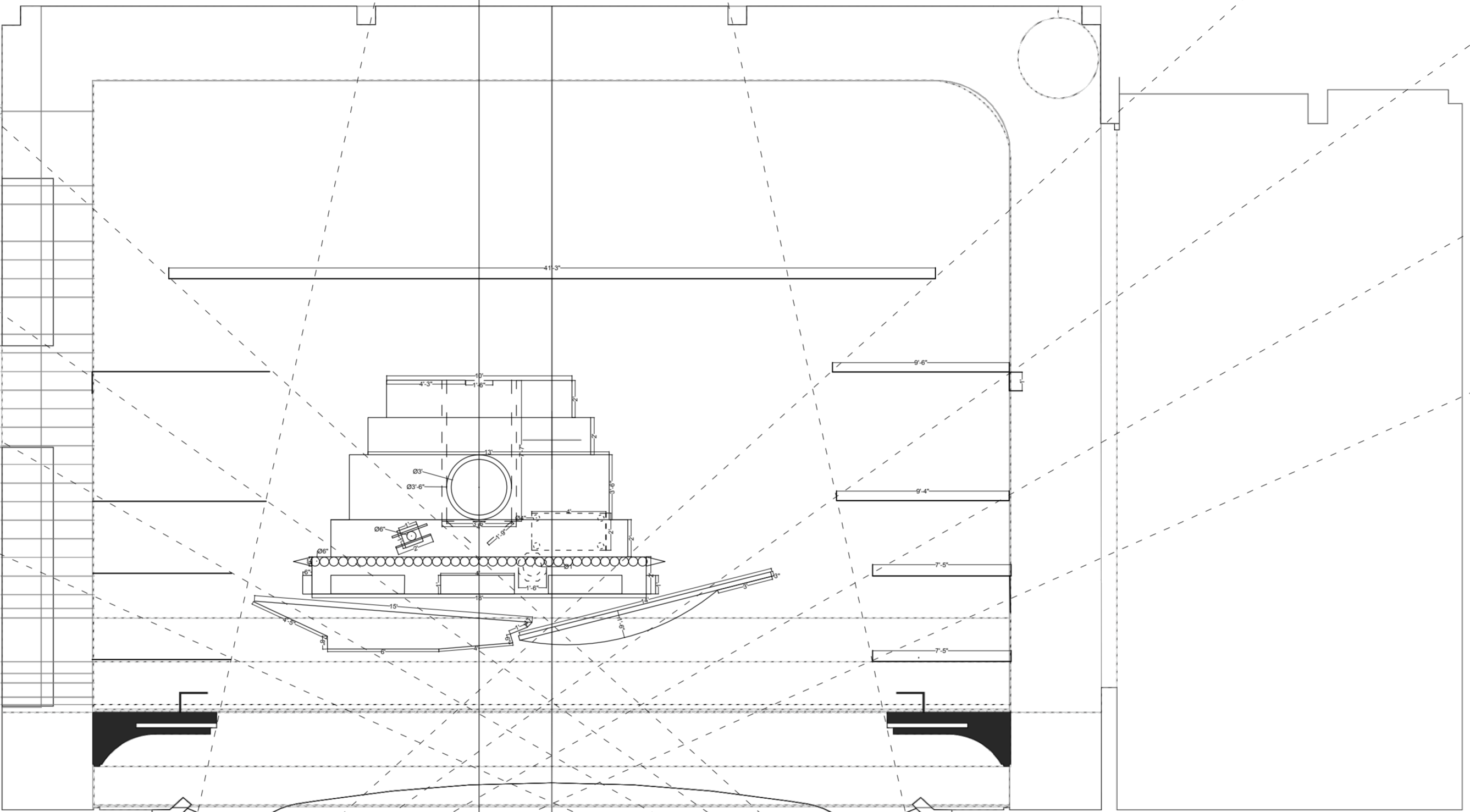


- +32'-0" #25 CYC
- +28'-0" #24 CYC LX
- +27'-0" #23
- +25'-0" #22
- +24'-0" #21
- +23'-0" #20
- +22'-0" #19
- +20'-0" #18
- +19'-0" #17
- +18'-0" #16
- +17'-0" #15
- +16'-0" #14
- +15'-0" #13
- +14'-0" #12
- +13'-0" #11
- +12'-0" #10
- +11'-0" #9
- +10'-0" #8
- +9'-0" #7
- +8'-0" #6
- +7'-0" #5
- +6'-0" #4
- +5'-3" #3
- +4'-8 1/2" U/S BRIDGE
- +2'-4 1/2" D/S BRIDGE
- +1'-9" #2
- +1'-3" #1
- ASBESTOS CURTAIN
- +0'-0" SETTING LINE



**HANSEL UND GRETEL**  
 BY HUMPERDINCK  
 UNIVERSITY OF BRITISH COLUMBIA - FREDERIC WOOD THEATRE  
 UPDATED MAY 14, 2016  
 DRAWING : GROUND PLAN  
 DES : VANKA CHATRA SALIM  
 DRAWN BY : VANKA CHATRA SALIM  
 EMAIL : vankasim@gmail.com  
 SCALE : 1/4" = 1'-0"  
 DOC NO : 1 OF 6